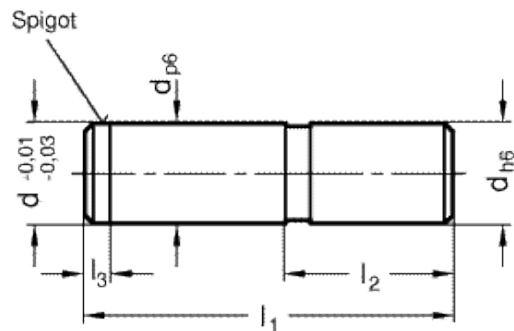
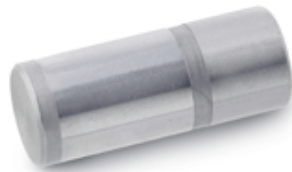


GN 771.1

Guide pins



technical informations

Material

Hardened steel (HRC 60 ± 2), fit sizes ground.

Features and applications

Guide pins GN 771.1 are normally used in combination with DIN 172 / DIN 179 guide bushes. The shaft tolerance p6 guarantees a perfect pressfit in a mounting borehole H7; the attachment lug l_3 makes the installation easier.

Standard Elements	Main dimensions				Weight	
	Description	$d_{p6/h6}$	l_1	l_2		l_3
	GN 771.1-4-16-8	4	16	8	1.5	2
	GN 771.1-5-18-8	5	18	8	1.5	3
	GN 771.1-6-22-10	6	22	10	1.5	10
	GN 771.1-8-24-10	8	24	10	2	15
	GN 771.1-10-28-12	10	28	12	2	20

GN 771.1-12-30-12	12	30	12	2.5	26
GN 771.1-16-36-16	16	36	16	2.5	32



STANDARD MACHINE ELEMENTS WORLDWIDE